

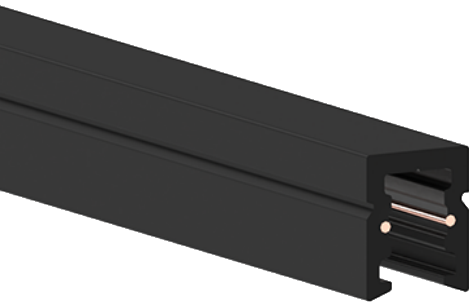
ODELI



Low Voltage Tracks

24/48 V

Low Voltage Tracks
Core 5 Tracks (24/48V)



Core 5 Track – LV (24V/48V)

Surface

Trimless

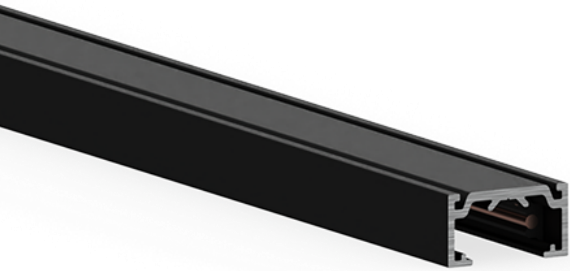
Suspended Double Emission*

Tiny Track

Reference	Configuration	Visual	Dimensions
Core 5 Track STUCCHI x ODELI	Surface (9800C)		
	Trimless (9800C-S3)		
	Suspended with Double Emission (9800C-S7)		
	Tiny Track		

*Les rails à double émission permettent d'intégrer un uplight et un downlight
The double emission tracks can use the top part for indirect light, installing for example an LED strip (uplight), the bottom part for downlight.

Low Voltage Tracks
Micro Tracks (24/48V)



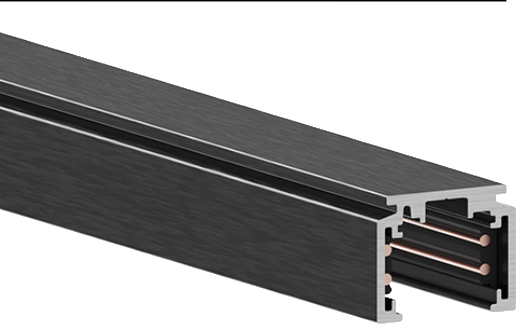
Micro Track – LV (24V/48V)

- Surface
- Trimless
- Suspended Double Emission*
- Round Double Emission*
- H Double Emission

Reference	Configuration	Visual	Dimensions
Micro / Core 11 Track STUCCHI x ODELI	Surface (9600-ST1)		
	Trimless I (9600-ST5)		
	Trimless II (9600-C-M5)		
	Suspended Double Emission I (9600C-M2)		
	Suspended Double Emission II (9600C-M6)		
	Round Double Emission (9600C-ST15)		
	H Double Emission (9600C-ST16)		

*Les rails à double émission permettent d'intégrer un uplight et un downlight
The double emission tracks can use the top part for indirect light, installing for example an LED strip (uplight), the bottom part for downlight.

Low Voltage Tracks
EVO Tracks (24/48V)

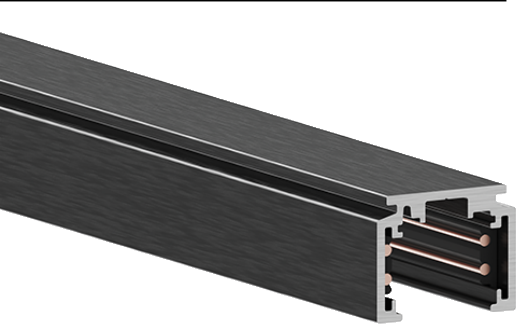


EVO Multisystem Track – LV (24V/48V)

- Surface
- Round
- Recessed
- Trimless
- Double Emission

Reference	Configuration	Visual	Dimensions
EVO Multisystem Track STUCCHI / EUTRACK x ODELI	Surface (9500-ST1-E)		
	Round (9500-ST15-E)		
	Recessed I (9500-ST8-E)		
	Recessed II (9500-ST18-E)		
	Trimless I (9500-ST5-E)		
	Trimless II (9500-ST10-E)		
	Trimless III (9500-ST13-E)		

Low Voltage Tracks
EVO Tracks (24/48V)



EVO Multisystem Track – LV (24V/48V)

Surface
Round
Recessed
Trimless
Double Emission

Reference	Configuration	Visual	Dimensions
EVO Multisystem Track STUCCHI / EUTRACK x ODELI	H Double emission (9500-ST2-E)		
	Double emission (9500-ST6-E)		
	Double emission (9500-ST7-E)		
	Double emission (9500-ST9-E)		

*Les rails à double émission permettent d'intégrer un uplight et un downlight
The double emission tracks can use the top part for indirect light, installing for example an LED strip (uplight), the bottom part for downlight.

ODELI

294 Rue Albert de Dion
63500 Issoire
Puy-de-Dôme, France

+33 (0)9 73 89 45 68
contact@odeli.fr
www.odeli.fr

